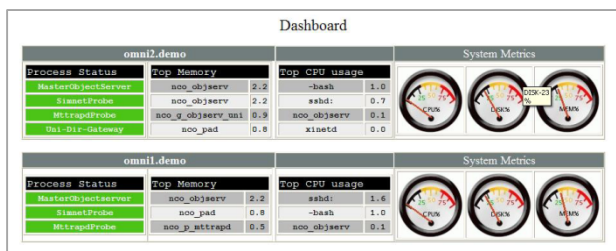


## WebAdmin: Maximizing ROI for Netcool

IBM/Tivoli Netcool has evolved into the premier real-time fault management and service assurance software. Leaders in every sector use Tivoli Netcool to proactively manage their Enterprise Operational and Support Systems. This widespread use has required organizations to invest precious time and energy in maintaining and administering the IBM/Tivoli Netcool suite of products that comprise the organization's Enterprise Management System.

As proactive management of infrastructures is embraced multiple instances of these solutions are likely to spring up. The need exists for a utility to simplify management of the IBM/Tivoli Netcool suite of tools. Softential WebAdmin provides the ability to control and automate Tivoli administrative tasks - both everyday adjustments and complex transitions - to save Netcool customers hundreds of thousands of dollars annually. WebAdmin is a complete solution from Softential for remote, centralized management of multiple Tivoli Netcool Implementations through a secure, user-friendly web interface.



Version Reporter interface with 'Select Hostname: omni2.demo'.

Product	Location	Version	Code Revision
<a href="#">Netcool/OMNIBus Object Server</a>	SNCHOME/omnibus/bin/nco_objserv	7.2.1	5.11.18
<a href="#">Netcool/OMNIBus Uni-Directional ObjectServer Gateway</a>	SNCHOME/omnibus/bin/nco_g_objserv_uni	7.2.1	5.11.18
<a href="#">Netcool/OMNIBus Bi-Directional ObjectServer Gateway</a>	SNCHOME/omnibus/bin/nco_g_objserv_bi	7.2.1	5.11.18
<a href="#">Netcool/OMNIBus MTTtrap probe</a>	SNCHOME/omnibus/probes/nco_p_mttrapd	7.2.1	5.11.18
<a href="#">Netcool/OMNIBus Syntax Checking probe</a>	SNCHOME/omnibus/probes/nco_p_syntax	7.2.1	5.11.18
<a href="#">Netcool/OMNIBus SYSLOG</a>	SNCHOME/omnibus/probes/nco_p_syslog	-	-

Legend: \*\* Version / Code Revision is outdated  
\*\* Version / Code Revision is latest

PAD Manager interface showing process management and user configuration.

Process Name	Hostname	User	PID	Status	Action
MasterObjectServer	omni2.demo	netcool	24349	RUNNING	STOP
MttrapProbe	omni2.demo	netcool	24391	RUNNING	STOP
SimnetProbe	omni2.demo	netcool	24390	RUNNING	STOP
Uni-Dlr-Gateway	omni2.demo	netcool	29429	RUNNING	STOP

UserManager - Update form fields:

- User ID: readonly
- User Type: Read Only User
- Change Type: Read Only User
- Password: \*\*\*\*\*
- Full Name: Read Only User
- Phone Number (eg - 704-475-9494): 870-120-1116
- Email: [empty]

WebAdmin enables the centralized management of geographically distributed Tivoli Netcool implementations. Key features have been matured over time to provide immediate benefit to Netcool administrators.

### Configuration Management

- Improved accuracy of configuration changes
- Easier learning curve for users new to Tivoli

### Security

- Access control simplified via centralized management
- Operates across secure TCP/IP protocols

### Platform Support

- Supported on current versions of Red Hat Linux
- Supported on current versions of Sun Solaris
- Custom development for other platforms available

### Minimal Overhead

- Disk space and CPU footprints on hosts are minimal
- Low impact on system resources

### Common Tasks

- Distributing Probe Rules Files
- ObjectServer installation
- Centralized Process Control
- ObjectServer User Administration
- Webtop Server Configuration Tasks
- Single GUI point of access for all log files
- Configuration integrity checks



We **partner** with customers and prime integrators throughout engagements, **architect** best-of-breed turnkey solutions during the initial phase, **deploy** using best-in-class products based on a flexible cost pricing model and **maintain and enhance accounts over time** by providing superior care.

Tivoli/Netcool partners since 2000

Headquartered in Herndon, VA (DC Metro)  
Offices in New York City  
Philadelphia PA  
Atlanta GA  
Greenville, SC

40+ US-based engineers and consultants

Proven architect and delivery teams

Business Service Management and  
IT Infrastructure Management solution experts,  
with 155+ deployments

Unparalleled Tivoli Product knowledge

Premiere AAA Accredited IBM partner

Authorized IBM Support Partner : Tier 1 and Tier 2

24x7 Helpdesk with Tier 1 and Tier 2 support

Over 55 current Netcool customers

Depth of expertise

Breadth of experience

Critical Mass of resources

Ability to scale for projects

Responsiveness and sense of urgency

**GSA Contract**

GS-35F-0202V

**CAGE CODE**

1VU45

**SIC Codes**

7371, 7373,  
7376, 7379

**DUNS**

059632153

**TIN**

54-2009032

**NAICS Codes**

541511, 541512,  
541513, 541519

**Contact**

Luke Hindman, General Sales

[Luke.Hindman@softential.com](mailto:Luke.Hindman@softential.com)

864-420-9755

